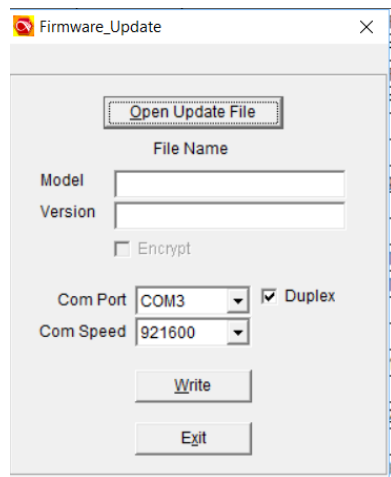


D578UV Mobile Radio




Firmware Update Instructions

**** Note: Once the radio is put in the FW update mode you must complete the FW Update Write to prevent the radio from staying in the Update Mode ****

- 1.) Power the radio **"ON"**.
- 2.) Press and Hold both the **MENU** and **EXIT** keys, and power the radio **"OFF"** You may see a non-relevant message on the display, keep holding the **MENU** and **EXIT** keys until the screen is off. After the screen is off, still keep holding the **MENU** and **EXIT** keys, release the power button and wait for a while, you get the blinking red light over the power-off button. Now you can release the **MENU** and **EXIT** keys.
- 3.) The red LED light should now be blinking, and the radio has entered into firmware update mode.
- 4.) Use the USB cable to connect radio to your PC.
- 5.) Open the radio Computer Programming Software (CPS) and go to **TOOLS > Firmware Update**



Notice: Sometimes the Firmware Update window does not come up on display, it is relating to Windows Permission. You can enter into the CPS installed folder to run the Firmware Update tool manually. Folder: D578UV_V1.16 -> Update -> QX_Firmware_Update.exe

	Main	2009-03-05 09:31	ACDSee ICO 图像	4 KB
	mysetup	2022-06-08 15:31	配置设置	1 KB
	QX_Firmware_Update	2022-06-08 15:31	应用程序	112 KB

- 6.) Select the **Open File** button and select the appropriate **D578UV.spi** file in the FW Update folder
- 7.) Check and Set the **Com Port** that is correct for your PC connected to the radio.
- 8.) Select the **Write** button to write the new FW to the radio.
- 9.) After the firmware update is finished, you must perform a Reset of the Radio (MCU Reboot).

D578UV Mobile Radio

Firmware Update Instructions

Notice: Some users report the radio loses power connection during the firmware upgrade, and unable to power on the radio. In this case, you can follow the below steps to do the firmware upgrade one more time.

- * Unplugged the power,
- * pressed and kept **menu**, **exit** simultaneously,
- * connected power while the two buttons were still being kept pressed,
- * after power connection was established, released menu and exit buttons together
- * the status led started flashing, the radio was back in upgrade mode.

Radio Reset / MCU Reboot

1) To Reset the Radio: Press and Hold the two front panel keys **P2** and the **Channel Knob** (the one above the microphone connector) Hold these two keys while turning on the radio and it will reboot the radio into the Reset Mode.

2) The radio Reset Screen will appear and ask you to **Confirm** the reset by pressing the Menu key on the front panel. The reset itself will take a minute or more.



3) After completing the reset, the **Calibration Date** settings screen will open. You need to set the correct information by using the Channel Knob. Pushing the Channel Knob will navigate through the GMT, Date and Time fields, Rotating the Channel Knob will allow you to change the settings. When finished setting the data, use the **Menu** button to Confirm and the radio will reboot.



4) After successfully resetting the radio, your codeplug will be gone and the factory smaller version loaded. You should now load your saved Code Plug into the radio. Check the Com Port, and from the CPS write your codeplug into the radio. No special set-up is required to write a codeplug into the radio.